



## 2003-Newer Chevy/GMC Express/Savana 2" Front Receiver Hitch

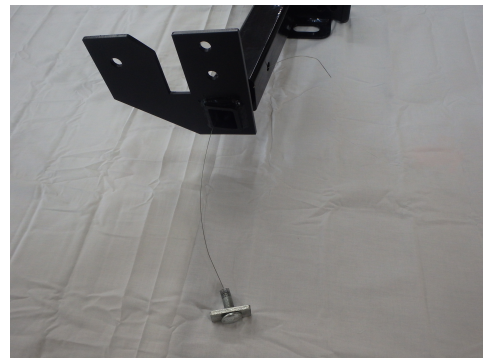
### Hardware:

- (1) Front Receiver Tube
- (2) Left/Right End Plates
- (2) Inner Frame Plates
- (2) 1" x 3" Frame Spacers
- (4) 1/2" x 1 1/4" Carriage Bolts
- (4) 1/4" x 1" x 2" Bolt Plates
- (4) 1/2" Lock Nuts
- (6) 1/2" x 4 1/2" Bolts
- (12) 1/2" Flat Washers
- (6) 1/2" Poly Locknuts
- (1) Pull Wire



### Instructions:

- 1.) Insert End Plates into hitch center section.
- 2.) Attach 1/4" bolt plate and 1/2" x 1 1/4" long carriage bolt to coiled end of pull wire.

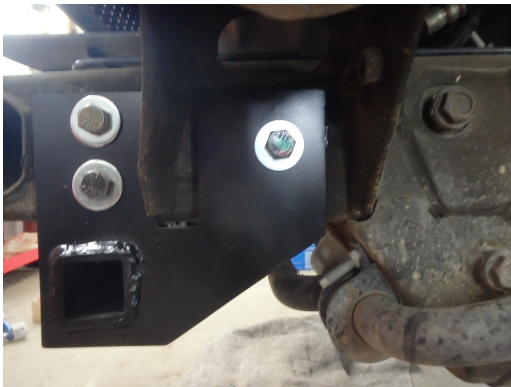


- 3.) Insert the pull wire through the end of the tube and out the hole in the receiver. Remove Pull Wire and install (1) 1/2" lock nut. Do not tighten at this time. Repeat with the remaining three bolt plate assemblies. (NOTE: Install the forward bolts before installing the rear).
- 4) Remove the lower plastic clips/air dam on the underside of the bumper.

5.) Install the 1" x 3" spacers into the rear pocket of the frame. (NOTE: You may need to clean the hole in the frame and tap the spacer using a soft face hammer or piece of wood as to not damage the spacer).



6.) Hold the receiver up in place and insert (6) 1/2" x 4 1/2" bolts with flat washers. Attach the plates on the inside of the frame with 1/2" flat washers and lock nuts. (NOTE: on 1500 models you may need to mark and drill the forward holes using a 1/2" drill bit).



7.) Tighten the (6) 1/2" x 4 1/2" frame bolts.

8.) Center the receiver between the frame rails and tighten the (4) 1/2" carriage bolts. (Torque all 1/2" hardware to 75 lbs).

9.) If reinstalling the air dam: hold plastic up in position, mark and cut around the 2" receiver.

10.) Reinstall air dam with factory clips.

If you have any questions, please email us at [info@boulderoffroad.com](mailto:info@boulderoffroad.com).